

ECOFLOW



Home Solar Battery Solution



One Powers All
EcoFlow OCEAN 2
Three-Phase

6/8/10/12 kW

EcoFlow OCEAN 2 Hybrid Inverter Three-Phase

Technical parameters		EF HD-P3-6K0-S2 EF HD-P3-6K0-S2F	EF HD-P3-8K0-S2 EF HD-P3-8K0-S2F	EF HD-P3-10K0-S2 EF HD-P3-10K0-S2F	EF HD-P3-12K0-S2 EF HD-P3-12K0-S2F
PV input	Number of MPP Trackers	3			
	Number of Strings per MPPT	1			
	Max. Input Power per MPPT(W)	8000	8000	8000	8000
	Max. Input Voltage ¹ (V)	1000			
	PV Operating Voltage Range(V)	50~1000			
	MPPT Voltage Range at Rated Power(V)	500~850			
	MPPT Start-up Voltage(V)	120			
	Max. Total Input Power(W)	12000	16000	20000	24000
	Max. Input Current per MPPT(A)	16			
	Max. Short Circuit Current per MPPT(A)	20			
AC Input/ Output (On-Grid)	Rated Input Power(W)	6000	8000	10000	12000
	Max. Apparent Power(VA)	6600	8800	11000	13200
	Supported Power Grid Types	Supports TN-S,TN-C,TN-C-S,TT systems			
	Nominal Voltage(V)	L-L:380/400Vac; L-N: 220/230Vac; 3L+N+PE			
	Nominal Frequency(Hz)	50/60Hz			
	Nominal Current	8.7A@230V; 9.1A@220V;	11.6A@230V; 12.2A@220V;	14.5A@230V; 15.2A@220V;	17.4A@230V; 18.2A@220V;
	Max. Output Current(A)	10.7	14.3	17.8	21.4
	Max. Input Current(A)	63	63	63	63
	Power Factor	0.8 leading ~ 0.8 lagging			
	THDi at Full Load	Current Total Harmonic Distortion ≤3%			
AC Output (Off-Grid)	Nominal Output Power(W)	6000	8000	10000	12000
	Nominal output voltage(V)	50/60Hz; L-L:380/400Vac; L-N: 220/230Vac; 3L+N+PE			
	Nominal output frequency(Hz)	50/60Hz			
	Nominal output current	8.7A@230V; 9.1A@220V;	11.6A@230V; 12.2A@220V;	14.5A@230V; 15.2A@220V;	17.4A@230V; 18.2A@220V;
	Off-grid THDu	≤2%			
Parallel Installation	Maximum on-grid capacity ²	Up to 5 cascaded inverters			
	Maximum off-grid capacity	Up to 2 cascaded inverters			
Battery Input/ Output	Rated Voltage(V)	800V			
	Voltage Range(V)	720~960			
	Battery Capacity	Up to 12 Battery Modules			
	Communication method	CAN			
Efficiency	Max. efficiency	97.8%			
	Self Consumption (Light-load scenario) ³ (W)	50			

Protection	Grid-to-Off-grid Switching Time ⁴ (ms)	0
	Off-grid-to-Grid Switching Time ⁴ (ms)	0
	GFCI	Yes
	AFCI	Yes
	PV Insulation Resistance Detection	Yes
	Anti-islanding Protection	Yes
	PV Reverse Polarity Protection	Yes
	Emergency Power Off (EPO)	Yes
	DC Surge Protection	Type II
	AC Surge Protection	Type II
	AC Overcurrent Protection	Yes
	AC Short Circuit Protection	Yes
AC Overvoltage Protection	Yes	
General	Relative Humidity	0% ~ 100%
	Operating Temperature Range	-20°C~60°C >40°C derating
	Storage Temperature(°C)	-30°C~60°C
	Operating Altitude(m)	3000, >2000 derating
	Ingress Protection Rating	IP66
	Communication Method	Bluetooth, WiFi, RS485, CAN
	User Interface	LED&APP
	Weight(kg)	Approx. 36.5
	Dimension (WxDxH) (mm)	680×203×406.5
	Environmental Category	Outdoor/Indoor
	Mounting Method ⁵	Floor Stand/Wall Mounted
Anti-theft	Supported	
Compliance	IEC/EN 62109-1, IEC/EN 62109-2, AS 60947.3, ISO 4892-4 EN 300 328, EN 301 893, EN 301 489-1, EN 301 489-17 V3.3.1, EN IEC 61000-6-1, EN IEC 61000-6-2, EN IEC 61000-6-3, EN IEC 61000-6-4, EN IEC 61000-3-11, EN 61000-3-12, EN 55011, EN 62920, EN IEC 62311, EN 50665 VDE-AR-N 4105, EN 50549-1, EN50549-10, AS/NZS 4777.2, OVE-Richtlinie R, TOR Erzeuger (for Type A), PTPIREE (Type A), PPDS, CEI 0-21, G98, G99, G100, G98 NI, G99 NI, TR3.3.1 UNE 217001, UNE 217002, IEC 62116, NTS(Type A), C10/C11, SI 4777.2, Portaria n.º 73/2020	

1. PV input voltage should not exceed the specified maximum value. Exceeding this limit may trigger system protection or affect normal operation.

2. In grid-connected parallel operation, load-side current is limited by the maximum input current rating of the grid port.

3. 50±1W indicates the system self-consumption measured under light-load conditions (<300W total load) in a laboratory environment.

4. The 0 ms transfer time applies under the following conditions: compliance with local grid regulations, in the open-circuit state of the power grid, total load power does not exceed the rated output backup power, stable grid conditions.

5. Maximum 3 battery packs supported for wall-mounted installation.

EcoFlow OCEAN 2 LFP Battery 5kWh

Technical parameters		EF BD-5-S2
Performance	Battery Nominal Capacity(kWh)	5.02
	Battery Cell Type	LiFePO ₄
	Nominal Charging Power(kW)	2.5
	Nominal Discharging Power(kW)	3.4
	Nominal Voltage(V)	400 / 800
	Operating Voltage Range(V)	360-520V / 720-960
General	Dimension(WxDxH) (mm)	680 × 196 × 279
	Weight (kg)	46
	Installation	Floor Stand: A stack of up to 6 batteries Wall Mounted: A stack of up to 3 batteries
	Operating Temperature ¹ (°C)	-20°C ~ 55°C ²
	Storage Temperature (°C)	-25°C ~ 60°C
	Max. Operating Altitude ² (m)	3000
	Relative Humidity	0% ~100%
	Cooling Method	Natural Cooling
	Ingress Protection Rating	IP66
	Anti-theft	Supported
	Communication method	CAN
	Protection	Over-charge/over-discharge protection, over-voltage/under-voltage protection, over-current protection, short-circuit protection, reverse-polarity protection, temperature protection, thermal-runaway protection, leakage-current protection, insulation protection, over-pressure protection, automatic power-off protection, emergency shutdown
Compliance	IEC/EN 62619, IEC/EN 62040-1, IEC/EN 62477-1, ISO 13849-1, VDE-AR-E 2510-50, EN IEC 61000-6-1, EN IEC 61000-6-2, EN IEC 61000-6-3, EN IEC 61000-6-4, UN 38.3	

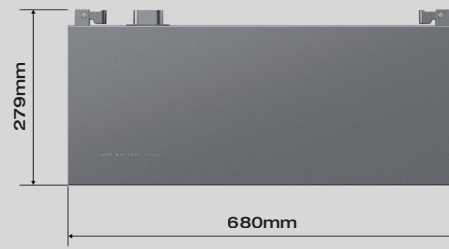
1. Power may be derated when the temperature exceeds 40 °C.

2. Power may be derated above 2000 m.

EcoFlow OCEAN 2 Hybrid Inverter



EcoFlow OCEAN 2 LFP Battery (5kWh)



Accessories

Emergency Stop Button

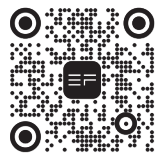
Designed to achieve rapid shutdown to cut off the power supply of the entire system.



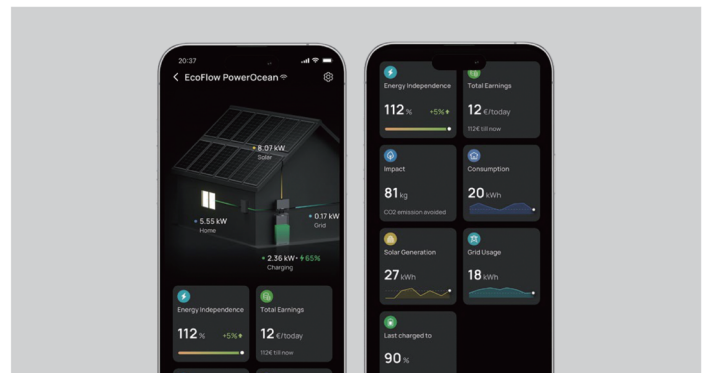
EcoFlow App and Web Portal

EcoFlow App and Web Portal For End Users

The EcoFlow app provides a simple, unified way to manage your EcoFlow products. Whether you're monitoring your home energy ecosystem or controlling EcoFlow portable power stations, everything is brought together in one intuitive platform—giving you personalised energy insights, control, and device management.



Scan the QR Code to Download



EcoFlow Pro App and Web Portal for Installers

Instant Setup

Complete installation with a fast, three-step commissioning process.

Mobile Control

Monitor and manage authorised systems directly from your smartphone.

On-the-Go Troubleshooting

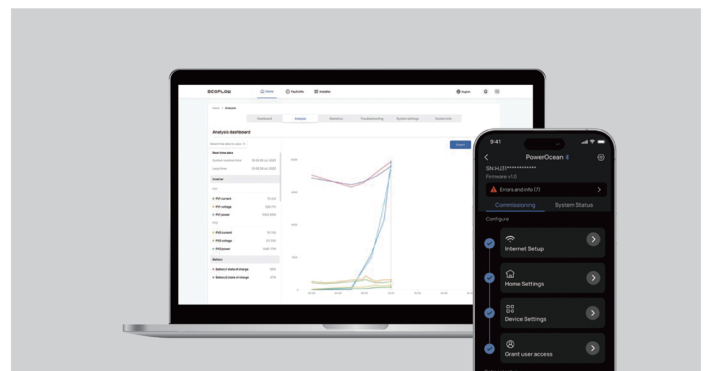
Identify and resolve issues faster with real-time error code alerts.

Detailed Diagnostics

Access in-depth error code details for precise troubleshooting and maintenance.



Scan the QR Code to Download



* Specifications, features, descriptions, availability, and other product information shown may differ from the actual product and are subject to change without notice. EcoFlow reserves the right to modify products and related information—including components, performance, and capabilities—at any time. Images and on-screen content are for demonstration purposes only.

Follow Us

YouTube: EcoFlow EU

LinkedIn: EcoFlow

Facebook/Instagram: @ecoflowtech

Contact Us

Web: <https://homebattery.ecoflow.com>

Email: solutionsales.eu@ecoflow.com

Q EcoFlow On-the-Road



Become Our Partner