

EV Charger

# EcoFlow PowerPulse 2

Empower Every Drive with Smart Charging



EV Charger

# EcoFlow PowerPulse 2

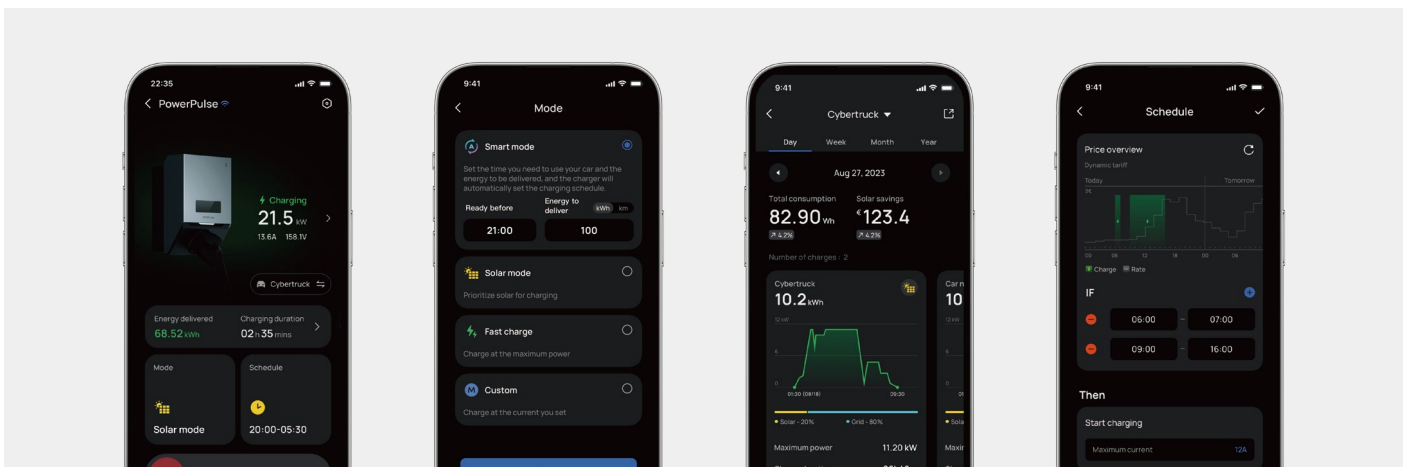
Empower Every Drive with Smart Charging



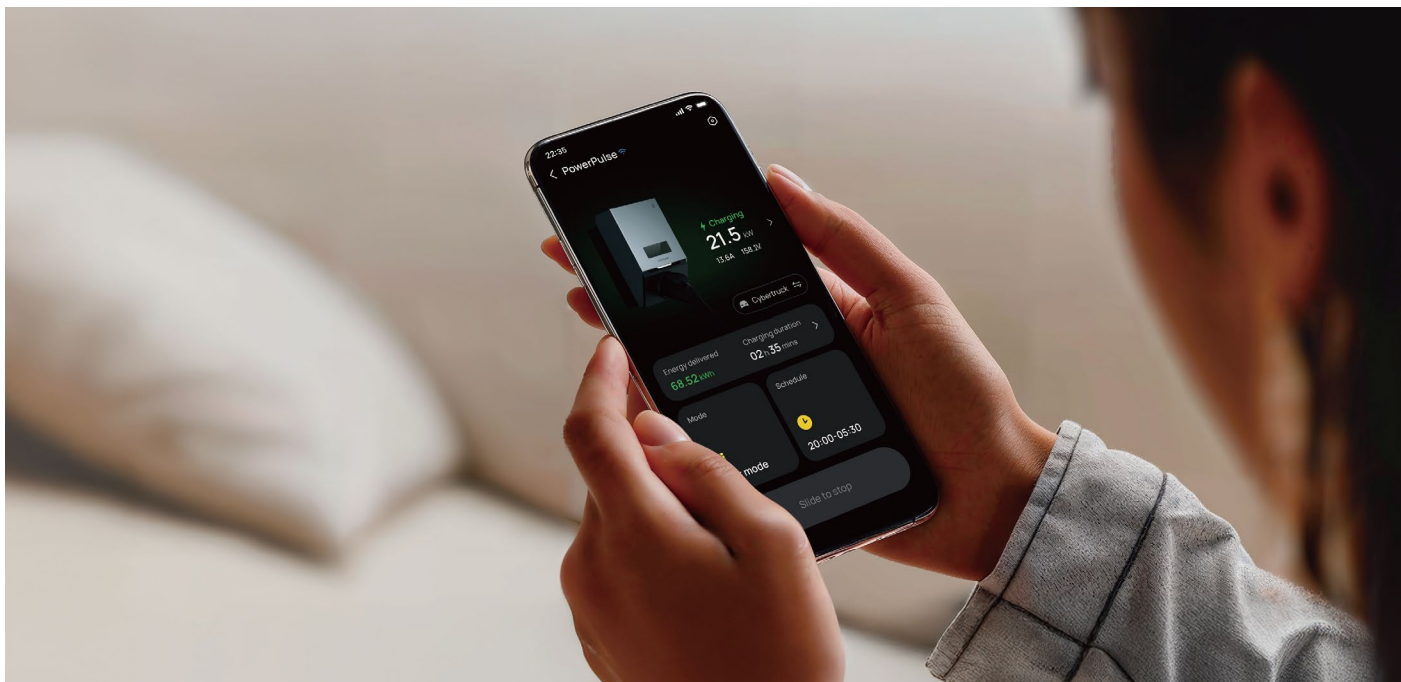
EcoFlow PowerPulse 2 unlocks AI-driven intelligence within the EcoFlow ecosystem, allowing it to adapt to your energy needs in real-time, prioritize solar energy usage, reduce reliance on the grid, and cut energy costs. With interactive display, users can enjoy real-time monitoring and easy switching, have complete control over their charging experience.

## Variety of Charging Options at Your Fingertips

Customise your charging experience with multiple options, all crafted for maximum convenience and efficiency. Whether you're optimising for speed, cutting costs, or harnessing the full potential of solar energy, effortlessly switch between modes to suit your needs.







### **Smart Mode** DYNAMIC TARIFF SUPPORTED

Input your energy goals and charging times. Smart Mode optimizes EV charging, ensuring efficiency and cost savings with dynamic pricing.

### **Solar Mode**

Integrates seamlessly with third-party solar solutions or your PowerOcean, enabling free charging whenever solar energy is available.

### **Fast Charge**

Charges rapidly and efficiently from any energy source, automatically adjusting power to your selected maximum current for a smooth charging experience.

### **Scheduled Charging**

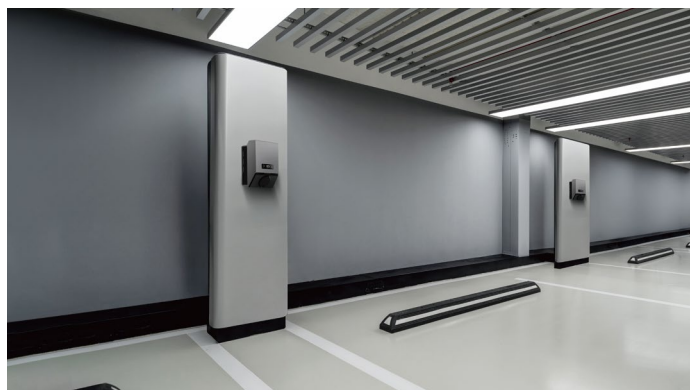
Conveniently set charging schedules to maximise off-peak electricity rates, ensuring your vehicle is ready exactly when you need it.



\*Our partner brands span the entire European region, with availability varying by country.

## Seamless Charging for Every Car, Every Time

Perfect for multi-car households or commercial use, PowerPulse 2 dynamically adjusts charging power in real time for each vehicle, ensuring uninterrupted charging, optimised energy usage, and dependable performance for multiple vehicles simultaneously.



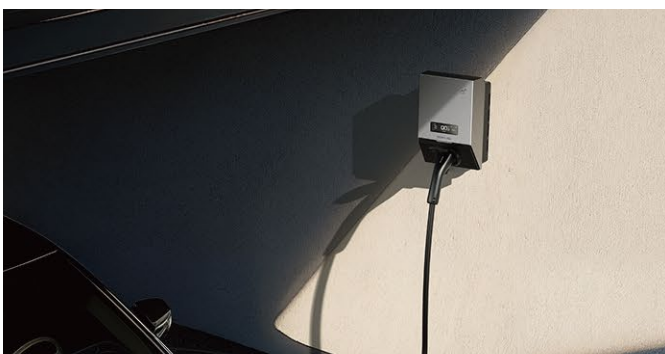


## Powered by an Integrated Ecosystem

Take control of your energy like never before. Let AI intelligently optimise your surplus solar—maximising efficiency and savings. Customise your battery backup to prioritise key appliances, and effortlessly manage your energy flow with a smooth drag-and-drop interface. Smarter power, your way.

## See Your Charging Status at a Glance

The sleek LCD display lets you quickly view battery status, mode, and charging progress. Switch modes with a tap of your RFID card for easy control. Plug in the charger, and it starts charging automatically for a seamless, intuitive experience.



## Real-Time Load Balancing

Ensures safe, continuous charging without circuit overloads. PowerPulse 2 intelligently balances loads to deliver optimal charging speed every time.

## Your Home, All-in-One Control via EcoFlow APP

With the EcoFlow app, you can easily monitor, manage, and optimise your home's energy usage. From controlling smart devices to tracking detailed consumption, everything you need is right at your fingertips—in one seamless app.



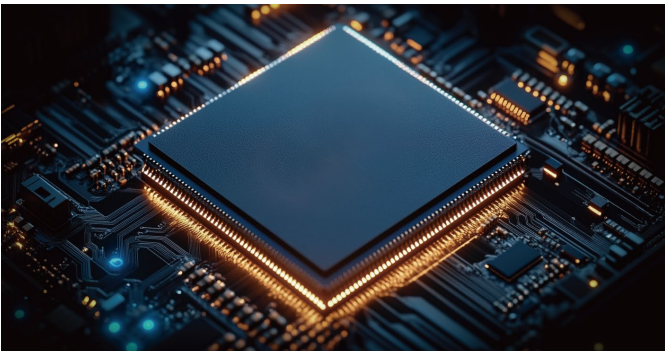


## 14a EnWG Compliant

PowerPulse 2 fully complies with Germany's 14a EnWG regulation, enabling grid operators to manage charging loads during peak demand periods while providing users access to lower grid tariffs.

## Built-in MID Meter

Accurately track every watt and optimise every cent spent. The built-in MID meter ensures precise, reliable electricity billing for commercial use.



## PowerPulse 2: What's Changed

	PowerPulse 1	PowerPulse 2
AC Output	Max. 3.7kW (single-phase) / 11kW (three-phase)	Max. 7.4kW (single-phase) / 22kW (three-phase)
PowerOcean Integration	Yes	Yes
Charging Mode (on EcoFlow APP)	Solar Mode Fast Charging Scheduled Mode	Smart Mode Solar Mode Fast Charging Scheduled Mode
Dynamic Tariff	Not Supported	Supported
Dimensions (W x D x H)	Approx. 283x178x99 mm	Approx. 333x226x145 mm
Weight	Approx. 3.3 kg	Approximately 3.5 kg
Warranty	3-year	3-year
Operation environment	Outdoor/Indoor	Outdoor/Indoor
Connectivity	EcoFlow APP	EcoFlow APP RFID card
Startup method	EcoFlow App Plug in the charger	EcoFlow App RFID card Plug in the charger
Communication protocols	/	OCPP1.6-J, MODBUS-RTU, DL/T645

\*All specifications and descriptions shown may differ from the actual specification of the product. EcoFlow reserves the right to make changes and amendments to the product shown and described here at any time without prior notice of such change. All functionality, features, specifications, design and other product information displayed in this webpage including, but not limited to, components, performance, availability, and capabilities of the product are subject to change without notice. The contents and simulated images within the screen are for demonstration purposes only.





**Follow Us:**

Facebook/Youtube/Instagram: @ecoflowtech

LinkedIn: @EcoFlow

**Contact Us:**

Web: <https://homebattery.ecoflow.com/eu>

Service: [solutionservice.eu@ecoflow.com](mailto:solutionservice.eu@ecoflow.com)