

Solar Battery Solution For House

# EcoFlow PowerOcean Three-phase 6/8/10/12kW

Innovation for Easy Power Independence





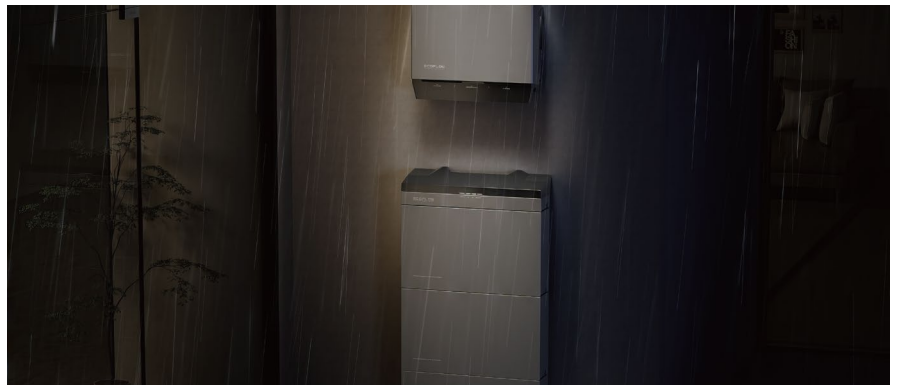
## EcoFlow PowerOcean Three-phase 6/8/10/12kW

Innovation for Easy Power Independence

**The innovative 3-phase solar battery solution  
starting from 5kWh, expandable at all times**

EcoFlow PowerOcean (Three-phase) is a premium modular home solar solution, featuring flexible upfront investment, outstanding safety, outage backup and super smart control; the solution is designed to achieve power independence for the whole house.





## Up to 12kW Three-phase Emergency Backup Power

The three-phase inverter is integrated with the backup module, offering up to 12kW output to power almost every essential appliance in case of any grid outage. It also supports your three-phase appliances during an outage.

## Kickstart from 1 Battery, Expandable up to 45kWh

Built-in DC-DC converter in each battery pack allows our three-phase hybrid inverter to simply operate with even one pack. Thanks to EcoFlow PowerOcean's advanced paralleled connection, you can add new batteries perfectly with the existing units up to 45kWh.

## LFP Battery Performance and Safety

The integrated fire-prevention module provides an extra layer of protection, activating when batteries overheat, and the intelligent BMS ensures each unit operates safely by avoiding overcurrent and overcharging.

# PowerOcean Hybrid Inverter 6/8/10/12kW

## Up to 12kW three-phase backup power

The EcoFlow PowerOcean Three-phase Hybrid Inverter 6/8/10/12kW version enables highly efficient solar energy usage and storage to achieve your home power independence. The three-phase inverter is integrated with a backup module, offering up to 12kW output to power almost every essential appliance in case of any grid outage.

### Up to 12kW

Power output

### Three-phase

Backup supported

### 96.5%

Max. efficiency



### Bypass circuit to secure stable power supply

If the inverter detects dysfunction, it will switch to the bypass mode, allowing grid power to flow through instead.

### Remotely scheduled OTA updates anytime

Without interrupting the power system.

### Smart heat pump supported through SG Ready (Smart Grid Ready)

For a heat pump with SG Ready control input, PowerOcean can distribute excess solar power for heating, further maximizing your home power independence.

# PowerOcean LFP Battery

## Fire-prevention safety

EcoFlow PowerOcean series is designed around the advanced PowerOcean LFP battery, a high-voltage battery system that is parallelly connected. Users can enjoy the flexibility of starting with a single battery of 5kWh and expanding their system at any time. With trusted LFP battery chemistry and fire-preventing safety measures, we deliver unrivalled battery reliability and performance.

**Up to 45kWh**

Expandable capacity

**6,000+\***

life cycles

**15**

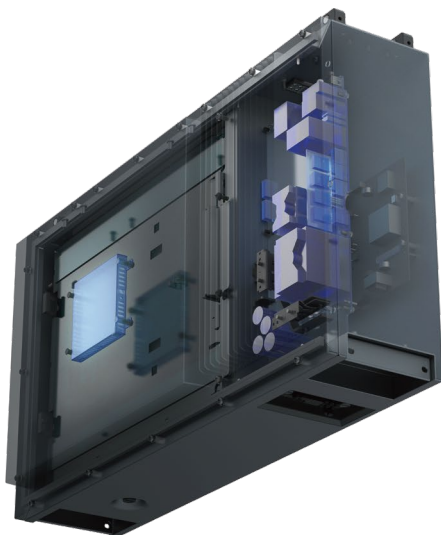
years of warranty

**LFP**

battery chemistry



\*6,000+ life cycle till degradation to 70%.



## Enhanced safety and reliability

**Parallel connections** avoid the mutual influence of batteries. The malfunction of one battery doesn't affect the others. And the new battery is perfectly compatible with the old one.

**Integrated BMS in every pack**, smartly monitor and prevent risks and improve battery performance.

**Fire prevention module** in every pack to detect battery temperature and is immediately activated when it's over 170°C.

**The auto-heating module** automatically activates during cold weather conditions to ensure battery functioning below -20°C.

## Meet the unique minimalist design

The PowerOcean series epitomizes the perfect blend of form and function, seamlessly integrating into living spaces. Its warm grey palette, achieved through a meticulous two-layer powder coating process, radiates elegance, while the iconic geometric form and horizontal edges exude robustness and reliability.



Plug and play

### Plug-and-play Battery Installation

- Wiring-free battery installation.
- Ultra-fast 3-step commissioning process.

### Ultra-thin compact size

Neatly fit in the basement or garage, saving more space for other appliances.

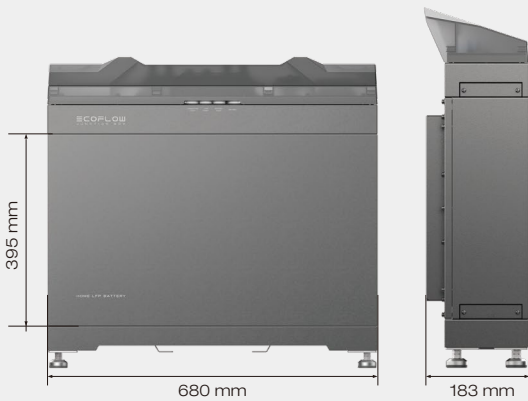
### Warm white light indicators

Add a sense of belonging, creating an inviting atmosphere.

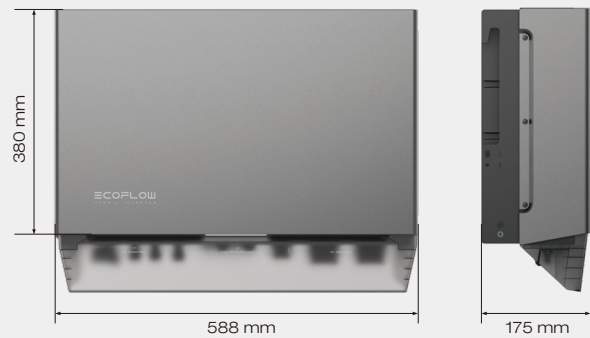
### Concealed screws

## Devices

EcoFlow PowerOcean LFP Battery



EcoFlow PowerOcean Hybrid Inverter 6/8/10/12kW



## Accessories

### 4G Dongle ESS (EU)

Equip the EcoFlow PowerOcean (Three-Phase) with 4G network connectivity, and communicate with the unit in scenarios where Wi-Fi or ethernet network is absent.



### Emergency Stop Button

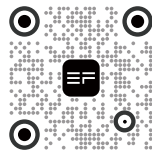
Designed to achieve rapid shutdown to cut off the power supply of the entire system.



## App and Web Portal

### For users: EcoFlow App/Web Portal

The EcoFlow App provides a clean and user-friendly interface for users to view real-time energy data, including power generation, storage and energy bill savings, to help better manage their home energy.



Scan QR code to download

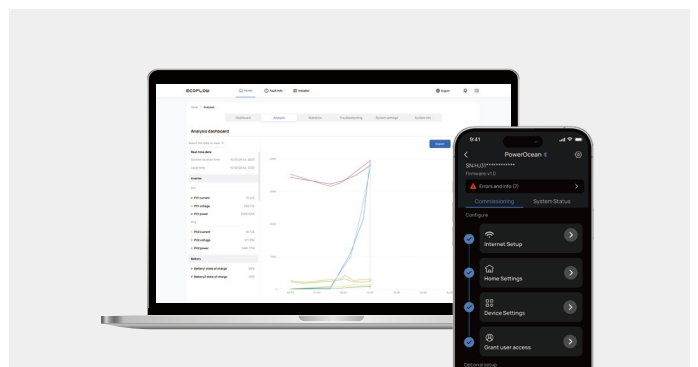
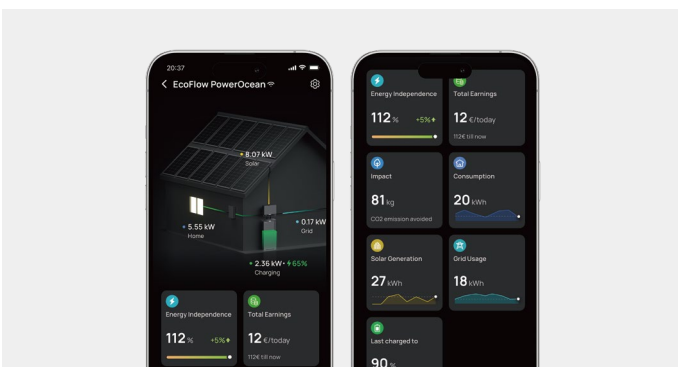
### For installers: EcoFlow Pro App/Web Portal

-Ultra-fast 3-step commissioning process.  
-Comprehensive map view of authorized systems.  
-Easy troubleshooting.

- Prioritize error codes according to the emergency level.
- Know the error code in details.



Scan QR code to download



\*All specifications and descriptions shown may differ from the actual specification of the product. EcoFlow reserves the right to make changes and amendments to the product shown and described here at any time without prior notice of such change. All functionality, features, specifications, design and other product information displayed in this webpage including, but not limited to, components, performance, availability, and capabilities of the product are subject to change without notice. The contents and simulated images within the screen are for demonstration purposes only.



**Follow Us:**

Facebook/Youtube/Instagram: @ecoflowtech

LinkedIn: @EcoFlow

**Contact Us:**

Web: <https://homebattery.ecoflow.com/eu>

Service: [solutionservice.eu@ecoflow.com](mailto:solutionservice.eu@ecoflow.com)